



+91 98951 77778



www.chakolashabitat.net

*Life is good
but it is better by the
Lake*



Chakolas Habitat is proud to announce the launch of its signature project '**PINNACLE**' exclusively orchestrated and designed to give you a panoramic view of the Vembanad Lake, Situated on the serene banks of the Kumbalam Island within a short drive from Kundanoor Junction; the project will also have good connectivity to M.G Road via Thevara on completion of the proposed Kumbalam – Thevara bridge.

PINNACLE consists of 3 and 4 bedroom apartments with a beautiful unobstructed view of the water front from all the apartments. The amenities being offered in the project are unique and definitely will be the best of its kind in Kochi.



+91 98951 77778



www.chakolashabitat.net



Chakolas
HABITAT



TYPE - A
4 BHK
Area : 2482 sq.ft
2nd to 4th Floor



- Dimensions may vary slightly during constructions
- Furniture and fixtures are indicative only
- All dimensions are in centimeters



WATER FRONT



TYPE - B

3 BHK

Area : 2232 sq.ft

2nd to 4th Floor



WATER FRONT



- Dimensions may vary slightly during constructions
- Furniture and fixtures are indicative only
- All dimensions are in centimeters



WATER FRONT



TYPE - C

3 BHK

Area : 2205 sq.ft

2nd to 4th Floor



WATER FRONT



- Dimensions may vary slightly during constructions
- Furniture and fixtures are indicative only
- All dimensions are in centimeters



TYPE - D

4 BHK

Area : 2456 sq.ft
3rd and 4th Floor



WATER FRONT



- Dimensions may vary slightly during constructions
- Furniture and fixtures are indicative only
- All dimensions are in centimeters



WATER FRONT

**TYPE - E**

4 BHK

Area : 2741 sq.ft

6,8,10,12,14 & 16th Floor

WATER FRONT



- Dimensions may vary slightly during constructions
- Furniture and fixtures are indicative only
- All dimensions are in centimeters



WATER FRONT

**TYPE - F**

4 BHK

Area : 3622 sq.ft

6,8,10,12,14 & 16th Floor

WATER FRONT





WATER FRONT



TYPE - G

4 BHK

Area : 3004 sq.ft

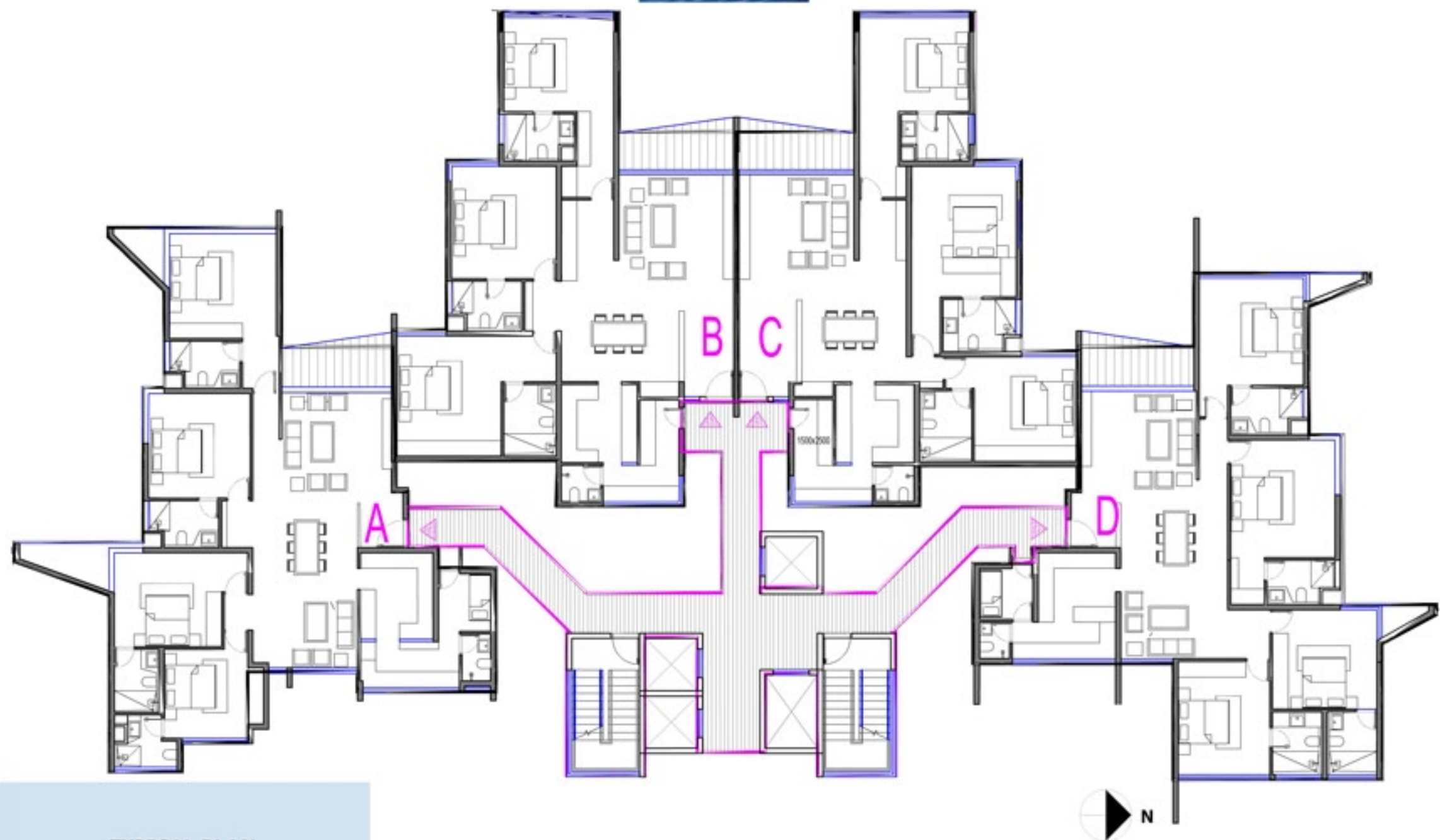
6,8,10,12,14 & 16th Floor



WATER FRONT



- Dimensions may vary slightly during constructions
- Furniture and fixtures are indicative only
- All dimensions are in centimeters



TYPICAL PLAN
L1, L2, L3



- Dimensions may vary slightly during constructions
- Furniture and fixtures are indicative only
- All dimensions are in centimeters



TYPICAL PLAN
L4



- Dimensions may vary slightly during constructions
- Furniture and fixtures are indicative only
- All dimensions are in centimeters



❖ SPECIFICATIONS

STRUCTURE

- RCC framed structure with masonry wall partitions cement plastered with puttyfinish. Earthquake resistant structure.

FLOORING

- Superior Quality matt finished vitrified tiles of size 80 x 80
- Designer tiles for the Toilets

WALLS

- Putty finished walls with premium quality acrylic Emulsion paint.

DOORS & WINDOWS

- Entrance Door - Hard wood doors and frames with video door phone
- Internal Doors - Pre-hung Doors. Jackson/ Equivalent
- Windows/ Balcony Doors - Powder coated Aluminum sections / UPVC

ELECTRICAL

- General - Concealed wiring with superior quality PVC insulated copper cables, Adequate light, fan, 6/16 Ampere power plug points controlled by ELCB and MCB, Independent Energy meter for each Apartment.
- Switches - LEGRAND / CRABTREE / EQUIVALENT
- Generator Backup - upto 3KVA for apartments.
- TV point provision - TV provision in living, kitchen and all bedrooms
- Telephone point provision - Telephone provision in living, master bedroom and kitchen.
- AC provision in all rooms

PLUMBING

- Water closets- / Wash basin : TOTO / KOHLER Equivalent
- Water cistern for EWC- : TOTO / KOHLER Equivalent
- Chromium plated bathroom faucets. GROHE / KOHLER Equivalent

UPGRADE PACKAGES

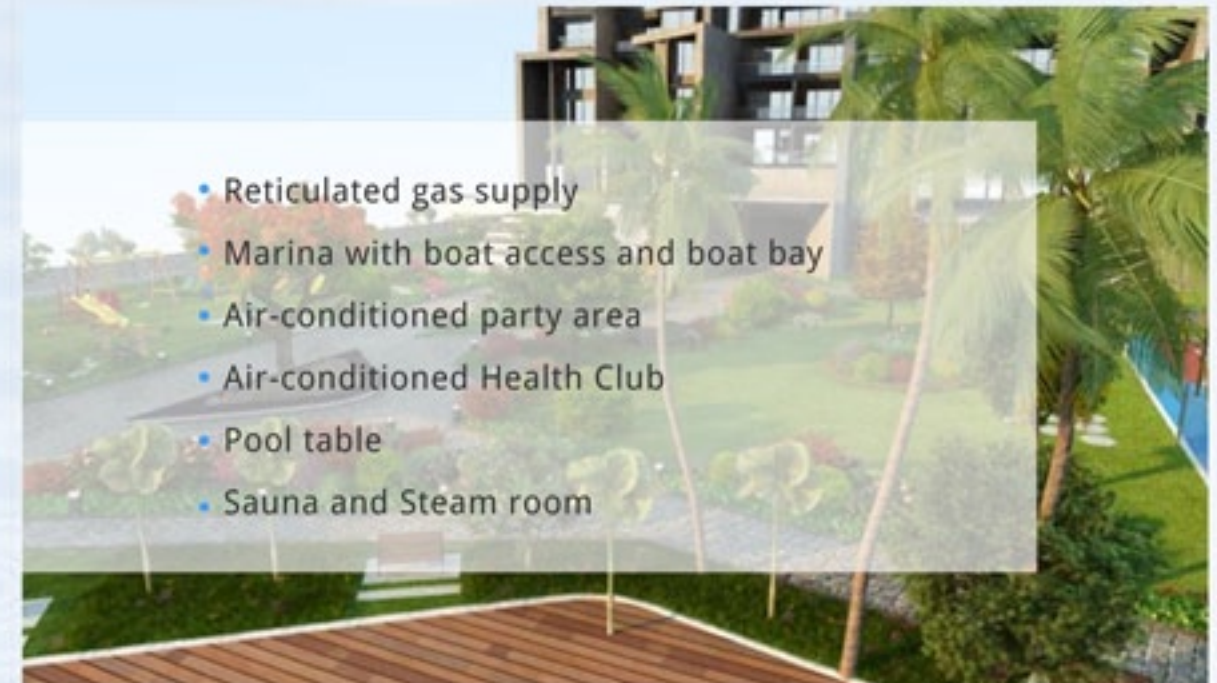
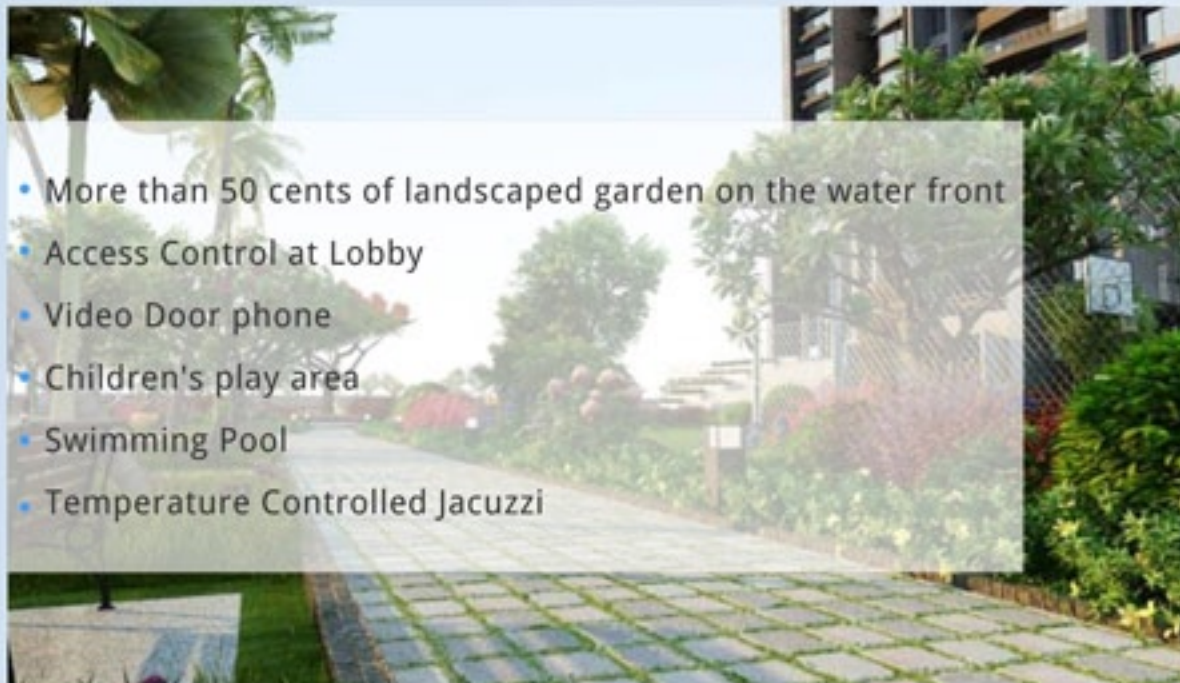
- Air-conditioning - Inverter a/c; MITSUBISHI/EQUIVALENT.
- Geysers in all bathrooms
- Kitchen cabinets
- Wardrobes in all Bedrooms, Bathroom vanity cupboard.
- Engineered wooden flooring
- Concealed lighting

Optional Upgrades

- VRV air conditioning
- Hard wood flooring
- Kitchen appliances



AMENITIES

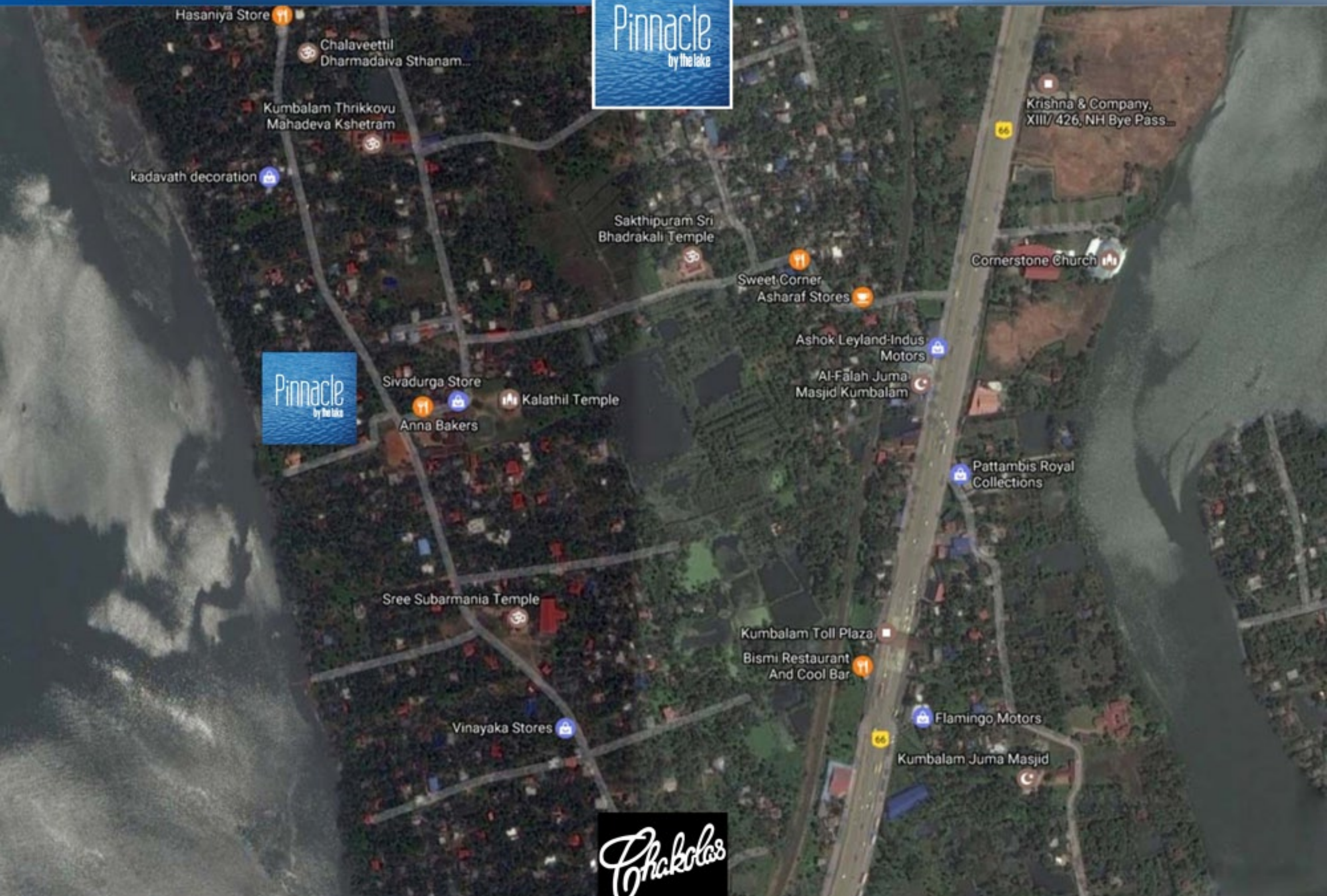




+91 98951 77778



www.chakolashabitat.net





◆ CONTACT US



Thevara Ferry Road
Thevara, Kochi - 682013
Kerala, India.

Tel : +91 484 2663113, 2664074, 4044057

Mob : +91 98951 77778

e-mail : marketing@chakolashabitat.net

anoop@chakolashabitat.net

web : www.chakolashabitat.net

